



**COMMUNITY
SPORTS
FOUNDATION**

**N THE
NEST**



SLT TOURS

RESIDENTIAL SPORTS TOURS

INFO@SLTTOURS.CO.UK WWW.SLTTOURS.CO.UK



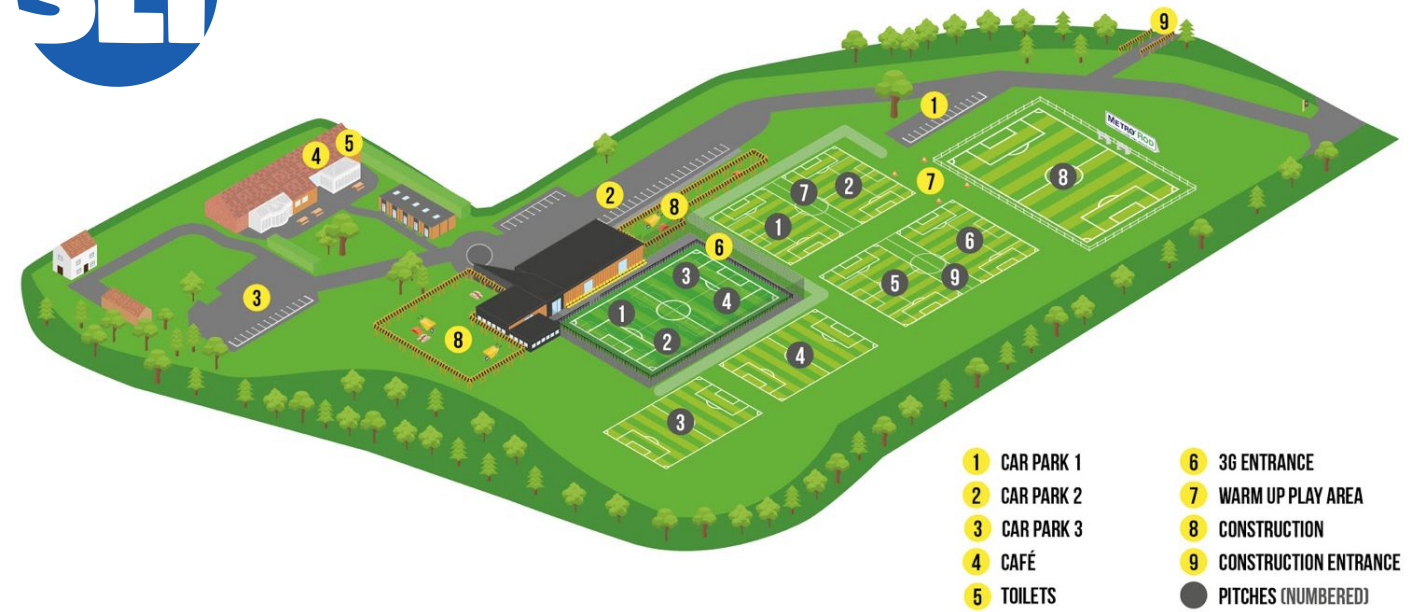
GREAT PRICES
2023/24

OVERVIEW

Norwich City Community Sports Foundation camps provide a unique opportunity for international groups and teams to enjoy a high-quality football residential break. Players will stay at the Foundation's state-of-the-art sports facility.

The Nest is located on the outskirts of the beautiful and historic city of Norwich. Players can enjoy the site's grass pitches, 3G stadium pitch, classrooms, IT suite and superb on-site accommodation.





WELCOME TO THE NEST

Tours at The Nest are developed in conjunction SLT Tours, contact them on info@slttours.co.uk or call David, the football tours consultant, on 07736320812.

Depending on the objectives of your tour and standard of the teams/group we can provide coaching led sessions, training, fixtures and excursions.

Our fantastic facilities all set in a green leafy secure 22-acre site can provide the professional setting for an elite team, international group, grassroots football club or schools.

Wi-Fi is provided in the clubhouse, bunkboxes and the Hub building free of charge.

The Nest is perfectly positioned for trips into the historic city of Norwich and the beautiful North Norfolk countryside and coastline.

AT A GLANCE

THE HUB FACILITIES INCLUDE:

Seven grass pitches, stadium 3G pitch with 100 seats, two classrooms, IT suite (10 Mac's), changing rooms, referees, disability changing and physio room.

ACCOMMODATION:

Five bunkboxes sleeps up to 14 each (a total of 70 individual). Clubhouse includes social space, showers, games room, Challenge Woods.



FOOTBALL

DURING YOUR STAY

- You can select the number of Training sessions you require either with your coaching staff or the Nest coaches
- Book the 3G stadium (100 seats) or grass pitches for training and matches based on your requirements
- Fixtures against similar level opposition, organised by SLT Tours
- Referees and linesman can be provided for your fixtures
- Classroom with large 3m TV screen and smaller TV's can be used for match analysis, tactical sessions or indoor strength and conditioning sessions
- Water stations to refill drinks bottles
- Changing rooms and showers available for residential and visiting teams



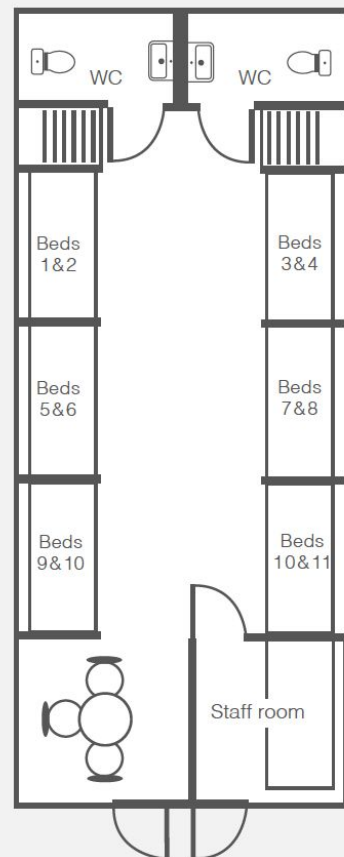


ACCOMMODATION

Our bespoke bunk-boxes are perfect for touring groups (with a private party leader room available in four of the boxes).

Bunks sleep 14 players, and all contain two WC facilities. Seven individual cubicle showers are located in the main clubhouse, two hair dryers are located in the main clubhouse.

BUNKBOX LAYOUT





DINING

Players can receive a full-board provision during their time at The Nest, with at least two hot meals served a day.

Our on-site catering staff means all meals are freshly prepared in our kitchen and can be flexible based on the needs of the group.



DURING YOUR STAY

- Breakfast, a selection of toast, cereal, yogurts and a hot option each day
- Lunch, a healthy light lunch of pasta, baked potatoes options with a salad bar and fruit
- Evening meal, includes a variety of meat and vegetarian options with a salad bar and dessert
- Soft drinks and water provided at all meals.
- Tea and coffee provided for all staff during your stay
- Vending machines and snack available to purchase





HUB FACILITIES

The Hub is the centre of our facilities with areas to work, learn, reflect and relax. Our cafe provides a range of food and barista served coffee.

The multi use spaces can be used for classrooms, studio fitness classes, pre match tactics sessions or just to relax and has great AV equipment.

ACTIVITIES IN THE HUB

- AV equipment includes a 3 metre wide TV Screen, PA system for match analysis, films or just plug in your laptop for your own presentations.
- Table Tennis
- Techball (outside use only)
- Cafe
- Physio room
- Changing rooms
- Referees changing rooms

These can be booked to enhance your stay at the Nest.





ACTIVITIES & FACILITIES

The Clubhouse will be the your main residential space with plenty of activities to keep your teams busy and relaxed during your stay.

The Challenge Woods and outdoor classroom is our newest edition to the site and can be used for an outdoor learning or physical activity space, as well as having lots of fun.

ON SITE ACTIVITIES

- Challenge Woods adventure play area with low level climbing wall and zip wire*
- Outdoor Classroom
- FIFA play stations (four)
- Pool
- Table football
- Table tennis
- Volleyball
- Outdoor cinema*
- Projector and PA system can be used for movies, quizzes or music

* Indicates an additional cost for activities



OPTIONAL EXCURSIONS



NORWICH CATHEDRAL

Visit the iconic Norwich Cathedral, with a spire that is a whopping 315ft tall.



NORWICH CASTLE

Explore Norwich Castle, which dates back to the time of William the Conqueror



NORWICH CITY CENTRE

Spend time in beautiful Norwich, the most complete medieval city in the UK



CARROW ROAD

Take a ground tour of Carrow Road, the home of Norwich City FC



NORWICH CITY FC HOME FIXTURE

If dates fit, cheer on the Canaries in match action at Carrow Road



GRAVITY TRAMPOLINE PARK

Jump, jump, jump! Enjoy a discounted rate at Gravity - the perfect gravity-defying evening activity.



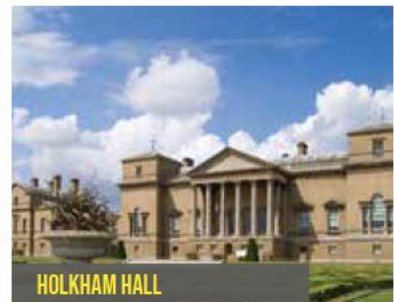
NORFOLK'S BEACHES

North Norfolk's stunning beaches are just a 45-minute drive away.



THE BROADS

The Broads are a national park and formed of over 125-miles of lock-free waterways - perfect for a relaxing boat trip!



HOLKHAM HALL

Marvel at historic Holkham Hall, and enjoy stunning beaches nearby

ABOUT NORWICH

Norwich is a wonderful fusion of the modern and historic. Like any great city, its centre is easy to walk around and has a river at its heart. As well as being the most complete medieval city in the UK, it has a flourishing arts, music and cultural scene, superb independent as well as high street shopping, lively restaurants and nightlife and a heritage that is a delight to explore.

GET IN TOUCH



To discuss your trip to The Nest with SLT Tours, please contact us at info@slttours.co.uk

www.slttours.co.uk

Follow us on social media @slttours



Instagram



OUR LOCATION - ALL SLT TOURS PACKAGES COME WITH A TOUR MANAGER AND COACH PICK UP AND DROP OFF FROM THE LOCATION OF YOUR CHOICE, WE CAN ARRANGE ALL THE EXTRAS AT YOUR REQUEST TO MAKE IT EASY AND *STRESS FREE WITH SLT.*

TRANSPORT:

The Nest is a short ten-minute drive from Norwich City Centre, and fifteen minutes from the main train station which has hourly trains to London and Cambridge.

AIRPORT:

Norwich International airport (with daily flights to Amsterdam and Edinburgh) is a two-minute drive. Stanstead airport is 1.5hr drive

